

# Tableaux d'une Exposition

de M. Moussorgsky

Trumpets 1 & 2 in C

Orchestration de Maurice RAVEL

## Promenade

Allegro giusto, nel modo russo; senza allegrezza, ma poco sostenuto.

*Play Long - mf*

*Relax easy*

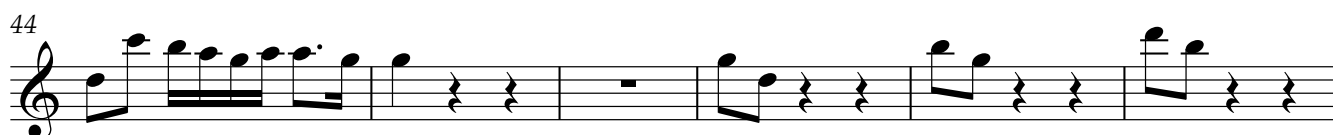
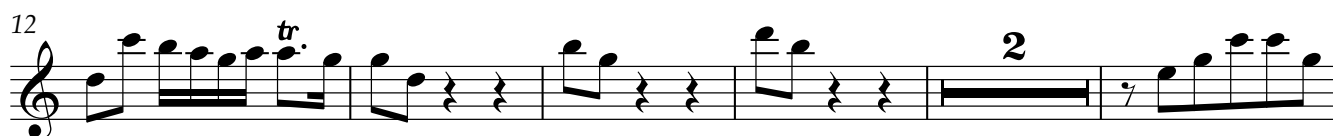
Tromba 1 (in D)

# Magnificat

BWV 243

J. S. Bach

## 1. Magnificat anima mea



23

O. RESPIGHI

# PINI DI ROMA

I. I pini di Villa Borghese - TACE

II. Pini presso una Catacomba

幕启

TROMBA INTERNA in Do

Lento

(Cadenza Corni) (Cadenza Corni)

10 *il più lontano possibile* Più mosso

in Do *f ma dolce ed espress.*

IL RESTO TACE

Trompete I in D.

Nr. 12. „Credo“ (Chor) tacet.

Nr. 13. „Credo“ (2.) (Chor).

Nr. 14. „Et in unum“ (Duett: Sopran und Alt). Nr. 15. „Et incarnatus“ (Chor.) } tacet.  
Nr. 16. „Crucifixus“ (Chor)

Nr. 17. „Et resurrexit“ (Chor).

Allegro, un poco maestoso.